



The DYNAMIC DUO

'Pin Flow and Plastic Magic – The Modellers Solvent Glue Solution

The Deluxe Materials 'Pin Flow' Solvent Glue Applicator has been specially designed for the precise control of liquid solvent plastic adhesives such as 'Plastic Magic'. When even a brush can sometimes deliver too much, this breakthrough device delivers just the right amount of adhesive to bond even the most intricate parts, prevents glue

runs, and allows for invisible joints, especially on clear plastic. 'Pin Flow' is easy to use and here's how it works....

Distributed to hobby shops in the UK by Creative Models

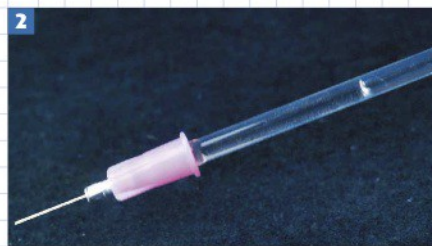
■ www.creativemodels.co.uk

North American distributor Horizon Hobby

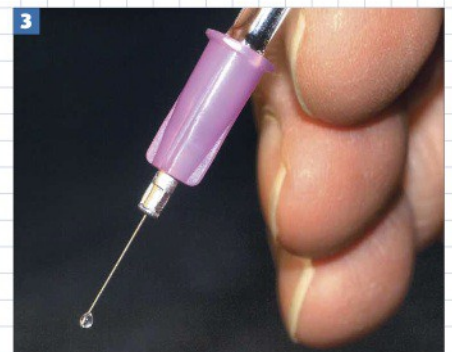
■ www.horizonhobby.com



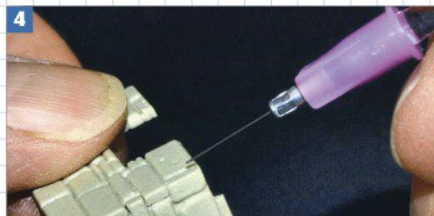
1 Drawing 'Plastic Magic' adhesive into the 'Pin Flow Applicator' is simple. Just invert the open end of the tube and place your clean finger over the 'Blunt' needle to retain the Plastic Magic in the tube. Then withdraw and invert to allow the glue to run down to the tip



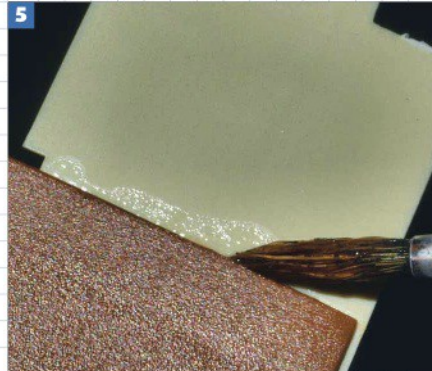
2 The loaded 'Pin Flow Applicator' is now ready for use. The device can be placed horizontally without the 'Plastic Magic' glue running out or evaporating



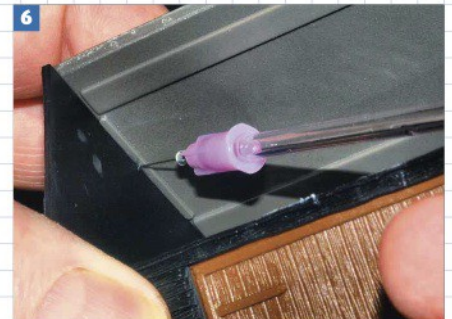
3 Now, hold the 'Pin Flow' at an angle and the glue will start to flow



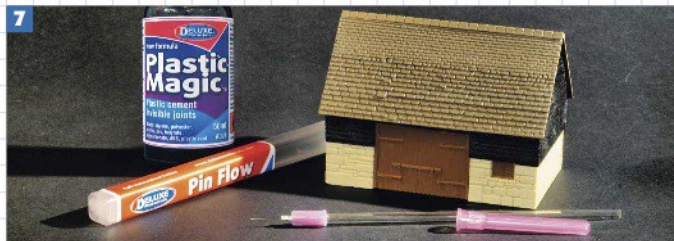
4 'Pin Flow' is particularly good for joining interlocking stone walls of a building, such as this barn - the right amount to the right place!



5 Now contrast this with the same situation, but using a brush. You can see the unnecessary amount of glue used, and the resulting messy joint



6 Here you can see how easy it is to attach the roof from the inside of the building using 'Pin Flow'



7 All you need for a neatly finished model - Deluxe Materials 'Plastic Magic' and 'Pin Flow'



8 Top modellers use 'Pin Flow', and here Jose Brito uses the device to assemble a tank-track run



9 Hints and Tips: Always draw or pull the tip. If it becomes blocked then immerse in glue overnight. Always replace cover when not in use and store in the outer case. Don't contaminate Plastic Magic bottles with a paintbrush as that might add plastic particles and clog the 'Pin Flow' tip